

# Getting Start with ArcGIS Software

Tran Quang Bao  
Department of Environmental Management  
Vietnam National University of Forestry

NR 506: GIS and Remote Sensing, Fall 2018

## Introduction to ArcGIS | CONTENTS

- Spatial Visualization & G.I.S.
- What is ArcGIS?
- Easy Mapping Techniques Using ArcGIS

NR 319: Geospatial Applications and Tools, Fall 2016

## Spatial Visualization & G.I.S | G.I.S.

- **Geographic Information System (G.I.S.)** if taken as a system, involves the hardware, software, peoples and the procedure in spatial data visualization, management, representation and analysis

## What is ArcGIS? | Software Background

- ArcGIS is the G.I.S. software program; developed & distributed by ESRI

**ArcGIS editions**

<b>ArcView</b> Standard	<b>ArcEditor</b> Professional	<b>ArcInfo</b> Enterprise
----------------------------	----------------------------------	------------------------------

.....➔ Increasing product price

## What is ArcGIS? | Software Background

### ArcGIS Interfaces

#### ArcCatalog

- Organization of GIS files
- Creation, Preview, Open GIS data files

#### ArcMap

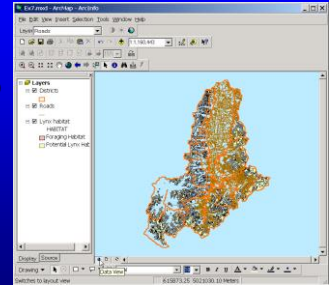
- Create, Edit, Manipulate, Analyze & Query GIS data

#### ArcToolbox

- Contains a set of handy tools
- Analysis, Conversion & Data Mgt Tools

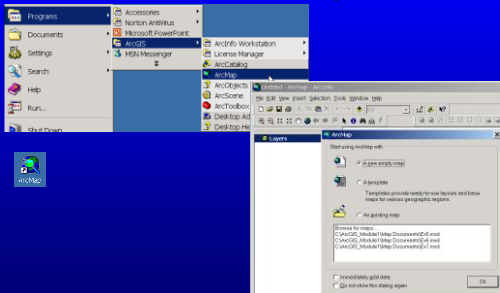
## ArcMap

- The central application in ArcGIS Desktop
  - All map-based tasks
  - Analysis
  - Query
  - Data Editing



## Starting ArcMap

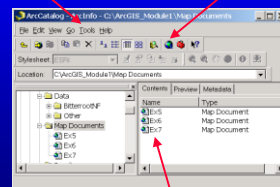
- From the Start menu or Desktop icon



## Starting ArcMap

- Three ways from ArcCatalog

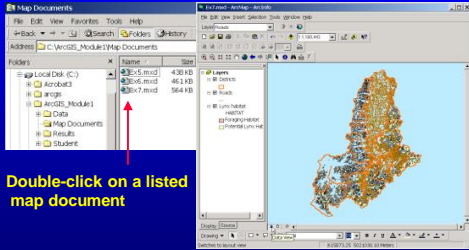
Choose from Tools menu      Click on icon



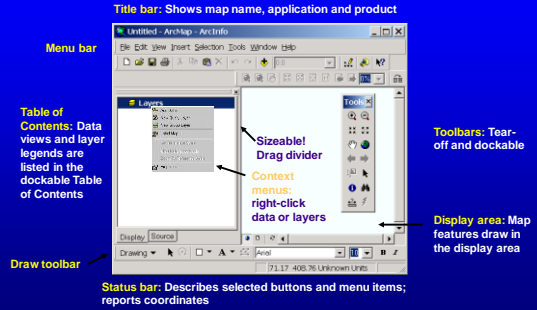
Double-click on a listed map document

## Starting ArcMap

- From MS Explorer



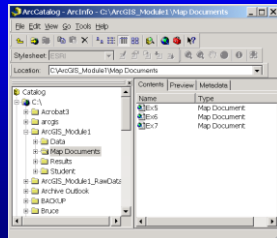
## ArcMap Interface Overview



## ArcCatalog

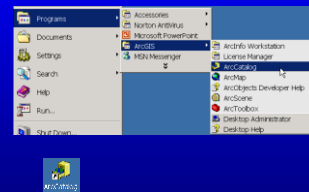
- Helps you organize and manage all of your GIS data

- Browsing
- Searching
- Metadata
- Quick Viewer
- Schema Development
- Create, Copy, Rename, Delete, Etc.



## Starting ArcCatalog

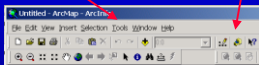
- From the Start menu or Desktop icon



## Starting ArcCatalog

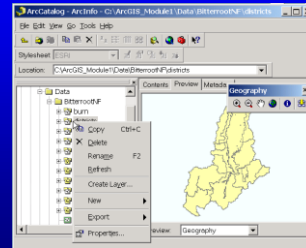
- From ArcMap

Choose from Tools menu      Click on ArcCatalog icon



## ArcCatalog Interface Overview

Title bar: Shows path to selected item



**Catalog tree:**  
Navigate to folders and databases; tear-off and dockable

**Context menus:**  
Right-click on items

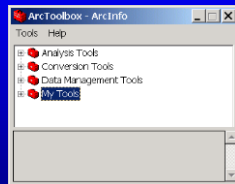
**Toolbars:**  
Tear-off and dockable

**Contents panel:**  
Three views on data; pull-down changes geography/tabular

**Status bar:** Describes selected tools and menu items

## ArcToolbox

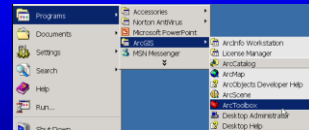
- Provides GIS tools used for geoprocessing



- A "window" to ArcInfo Workstation

## Starting ArcToolbox

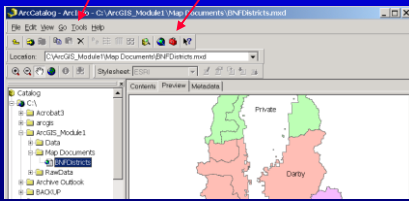
- From Start menu or Desktop icon



## Starting ArcToolbox

- From ArcCatalog

Choose from the Tools menu Click on ArcToolbox icon



## ArcToolbox Interface Overview

- Tools organized by function

- Only three levels deep

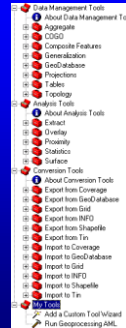
- Tool sets

- Information screens

- Tools

- Wizards

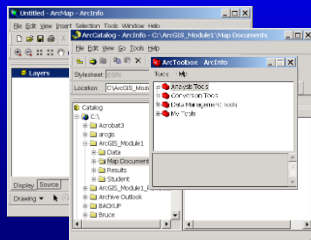
- Find tool



## Coordinated GIS

- ArcMap, ArcCatalog, & ArcToolbox are designed to work together to perform many GIS tasks

– You will learn how to work with all three parts.



## Symbolization

- Numerous methods

