

GIS Modelling

The Hugag is a curious mythical beast with strong preferences for terrain configuration:

- Prefers **low elevations** (severe nose bleeds at higher altitudes)
- Prefers **gentle slopes** (fear of falling over and unable to get up)
- Prefers **southerly aspects** (a place in the sun)

Hugag



Faerosee Catalogue of the Lumberwoods, by William T. Cox, 1910

The Hugag is a huge animal of the Lake States. Its range includes western Wisconsin, northern Minnesota, and a territory extending indefinitely northward in Canadian wilds toward Hudson Bay. In size the Hugag may be compared to the moose, and in form it somewhat resembles that animal. Very noticeable, however, are its jointless legs, which compel the animal to remain on its feet, and its long upper lip, which prevents it from grazing. If it tried that method of feeding it would simply tramp it upper lip into the dirt. Its head and neck are leathery and hairless; its strangely corrugated ears flop downward; its four-footed feet, long bushy tail, shaggy coat and general make-up give the beast an unmistakably prehistoric appearance. The Hugag has a perfect mania for traveling, and few hunters who have taken up its trail ever came up with the beast or back to camp. It is reported to keep going all day long, browsing on hickies, popping its lip around trees, and snipping bark as occasion offers, and at night, since it cannot lie down, it leans against a tree, bracing its hind legs and manning time with its front ones. The most successful Hugag hunters have adopted the practice of notching trees, so that they are almost ready to fall, and when the Hugag leans up against one both the tree and the animal come down. In its helpless condition it is easily dispatched. The last one killed, so far as known, was on the Turtle River, in northern Minnesota, where a young one, weighing 1,900 pounds, was found stuck in the mud. It was knocked in the head by Mike Flynn, of Cass Lake.

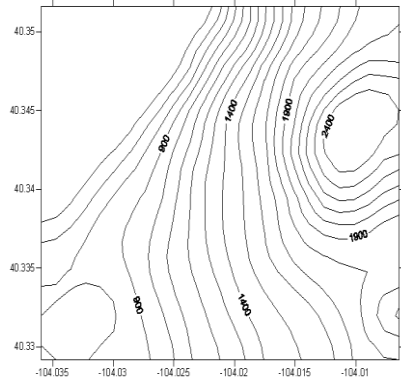


Hugags like...

- ✓ Gentle Slopes (under 30%)
- ✓ Southerly Aspects (E-W orientation)
- ✓ Lower Elevations (under 1800 feet)

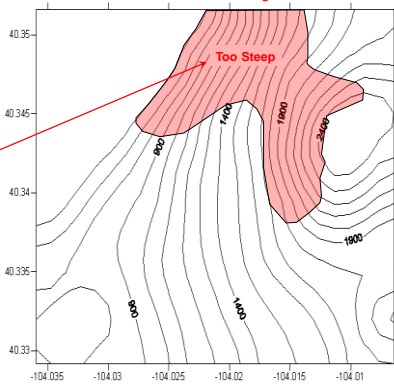


...how would you map Hugag habitat?



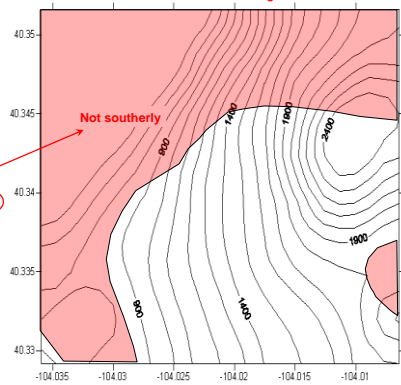
Manual Drafting

- Hugags like...
- ✓ Gentle Slopes (under 30%)
 - ✓ Southerly Aspects (E-W orientation)
 - ✓ Lower Elevations (under 1800 feet)



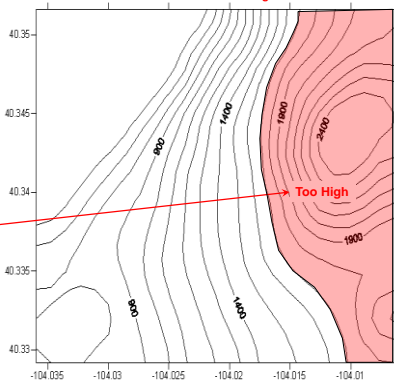
Manual Drafting

- Hugags like...
- ✓ Gentle Slopes (under 30%)
 - ✓ Southerly Aspects (E-W orientation)
 - ✓ Lower Elevations (under 1800 feet)



Manual Drafting

- Hugags like...
- ✓ Gentle Slopes (under 30%)
 - ✓ Southerly Aspects (E-W orientation)
 - ✓ Lower Elevations (under 1800 feet)



Manual Drafting - McHarg Overlay

- Hugags like...
- ✓ Gentle Slopes (under 30%)
 - ✓ Southerly Aspects (E-W orientation)
 - ✓ Lower Elevations (under 1800 feet)

